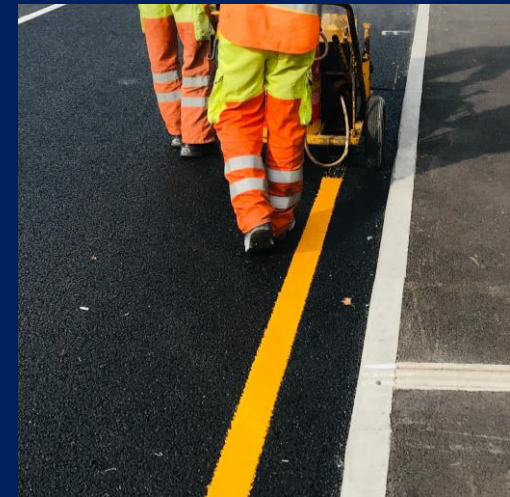


# Local Transport Plan

KEDOG, 20 August 2024



Subject to public consultation

# Contents

This briefing on the Local Transport Plan (LTP) covers:

- What is a Local Transport Plan?
- What is the Council consulting on?
- About the Council's public consultation
- When will the Local Transport Plan be completed?



# Introduction

- A statutory requirement of KCC as a Local Transport Authority, under the Local Transport Act 2000 (and as amended in 2008).
- Act says: *Each local transport authority must—*
  - (a) *develop policies for the promotion and encouragement of safe, integrated, efficient and economic transport to, from and within their area; and*
  - (b) *carry out their functions so as to implement those policies.*
- In summary - what the county needs where, by when, and why it needs it

A fifth plan covering the period to around 2037. Balancing needs for current network with investment in new and improved networks.

If adopted by the Council, it will replace the LTP4 *Delivering Growth without Gridlock (2016-2031)*

# LOCAL TRANSPORT PLAN 5

## STRIKING THE BALANCE



JULY 2024



# An ambition

We want to improve the health, wellbeing, and economic prosperity of lives in Kent by delivering a safe, reliable, efficient, and affordable transport network across the county and as an international gateway. We will plan for growth in Kent in a way that enables us to combat climate change and preserve Kent's environment.

We will do this by delivering emission-free travel by getting effective dedicated infrastructure to electrify vehicles, increase public transport use and make walking and cycling attractive. This will be enabled by maintaining our highways network and delivering our Vision Zero road safety strategy. These priorities will ensure our networks are future-proof, resilient and meet user needs.

# A series of intended outcomes

**1** The condition of our manage network is brought to satisfactory levels, helping to maintain safe and accessible travel and trade.

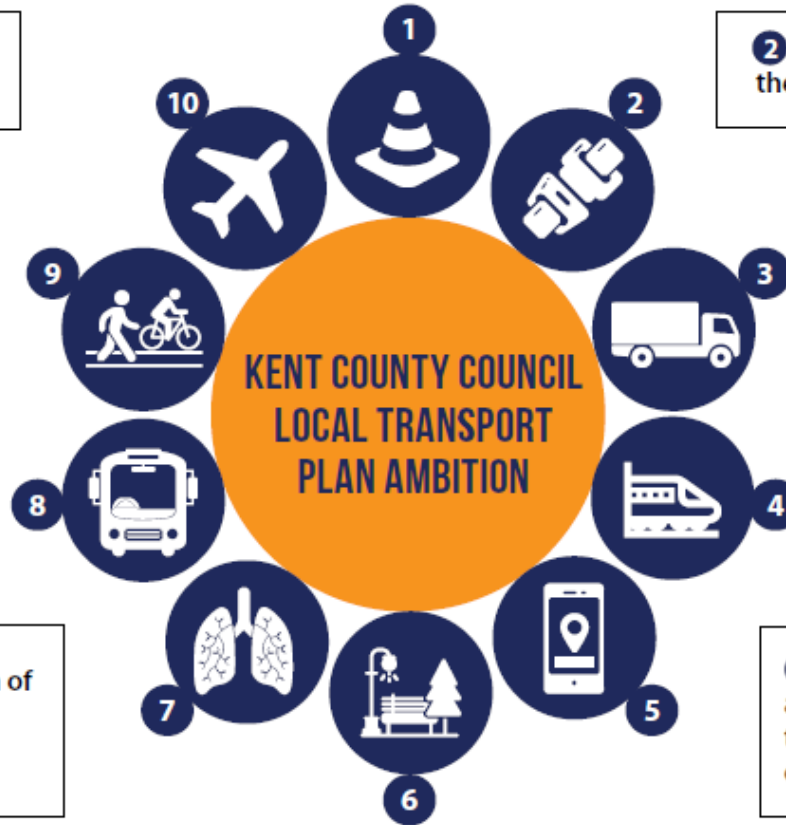
**2** Deliver our Vision Zero road safety strategy through all the work we do.

**3** International travel becomes a positive part of Kent's economy, facilitated by the county's transport network, with the negative effects of international haulage traffic decreased.

**4** International rail travel returns to Kent and there are improved public transport connections to international hubs.

**5** Deliver resilient transport, future-proofed for growth and innovation, aiming for an infrastructure-first approach to reduce the risk of highways and public transport congestion due to development.

**6** Access to Kent's historic and natural environment is enhanced.



**10** The quality of life in Kent is protected from risk of worsening noise disturbance from aviation.

**9** Health, air quality, public transport use, congestion and the prosperity of Kent's high streets and communities will be improved by supporting increasing numbers of people to use a growing network of dedicated walking and cycling routes.

**8** A growing public transport system supported by dedicated infrastructure to attract increased ridership, helping operators to provide more and invest in better services.

**7** Road-side air quality improves as decarbonisation of travel accelerates, contributing towards the pursuit of carbon budget targets and net zero in 2050.

# What is the Council consulting on?

# Key messages in the KOC Local Transport Plan

To aim to strike a balance across the transport mix and across the pressing issues of today compared to the long term.



This means putting maintaining our network at the forefront of the plan and the need for sustained sufficient funding.

Reiteration of the Council's comprehensive and detailed plan for investing government funding in improving the bus network.



These directly respond to the two most often cited issues – condition of the road network and concerns about the bus network.

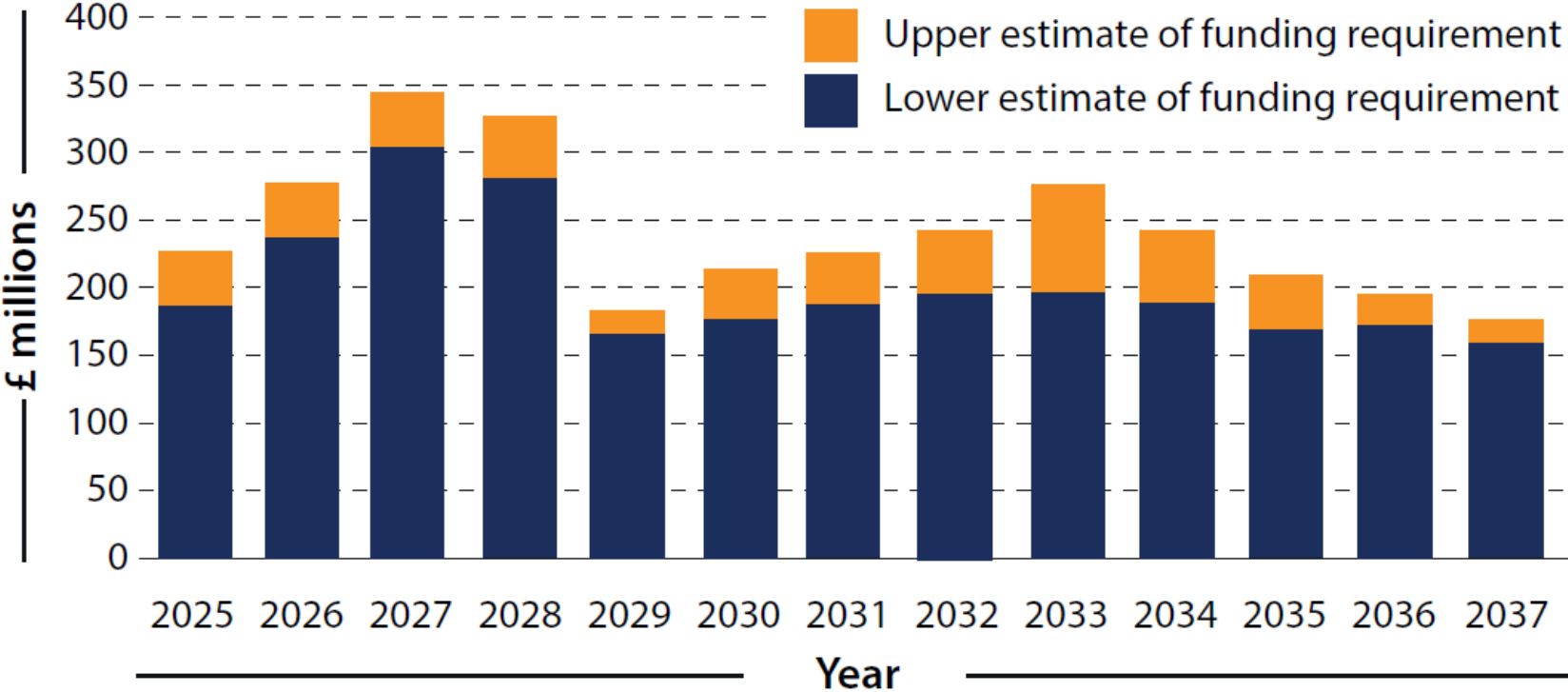


# Funding needed for the Local Transport Plan proposals

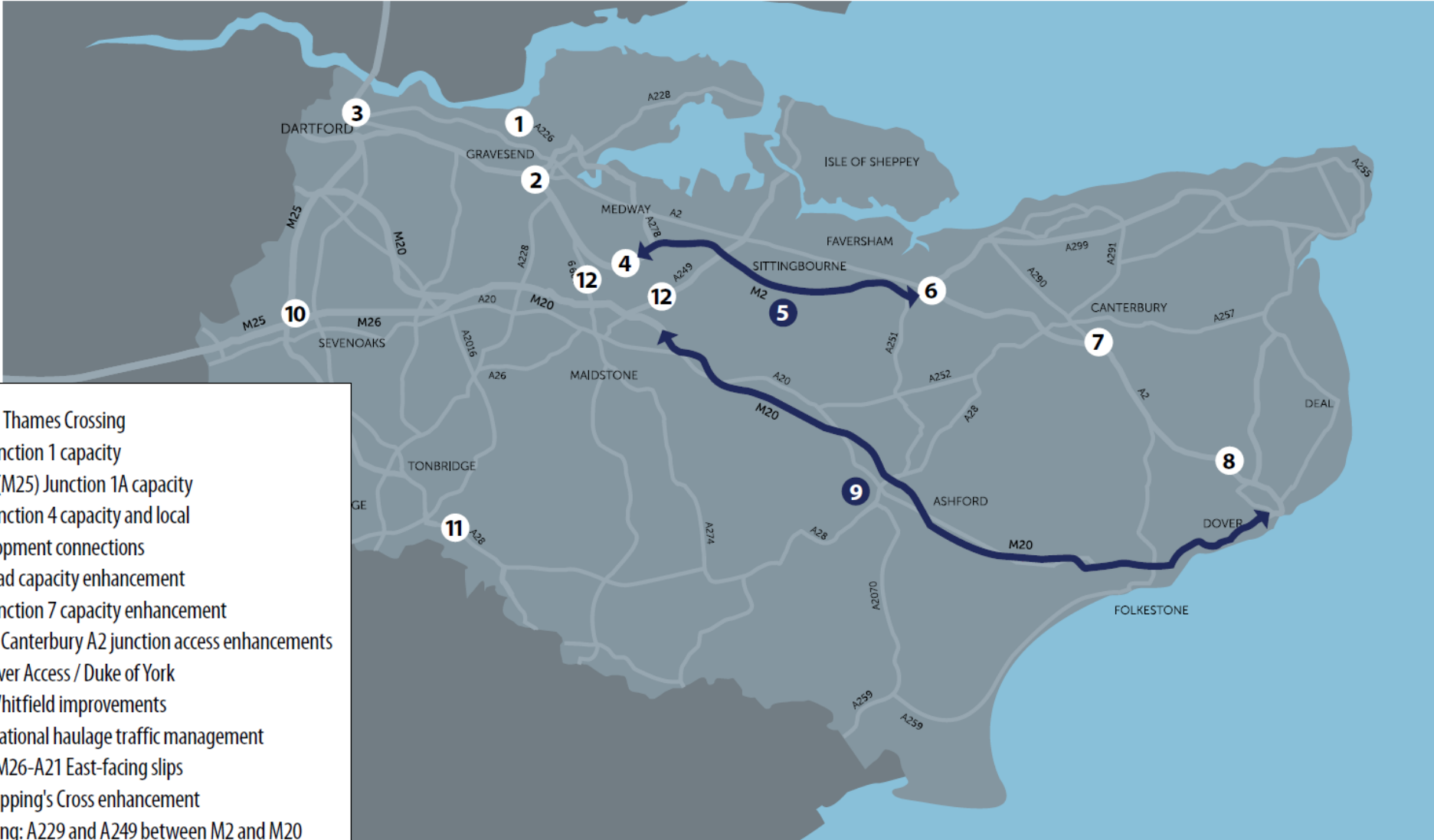
The funding requirement builds on the long-term capital plan estimates in the 2024/25 published budget book.

The funding for currently unfunded KCC deliverables is shown.

The funding will need to come from government.

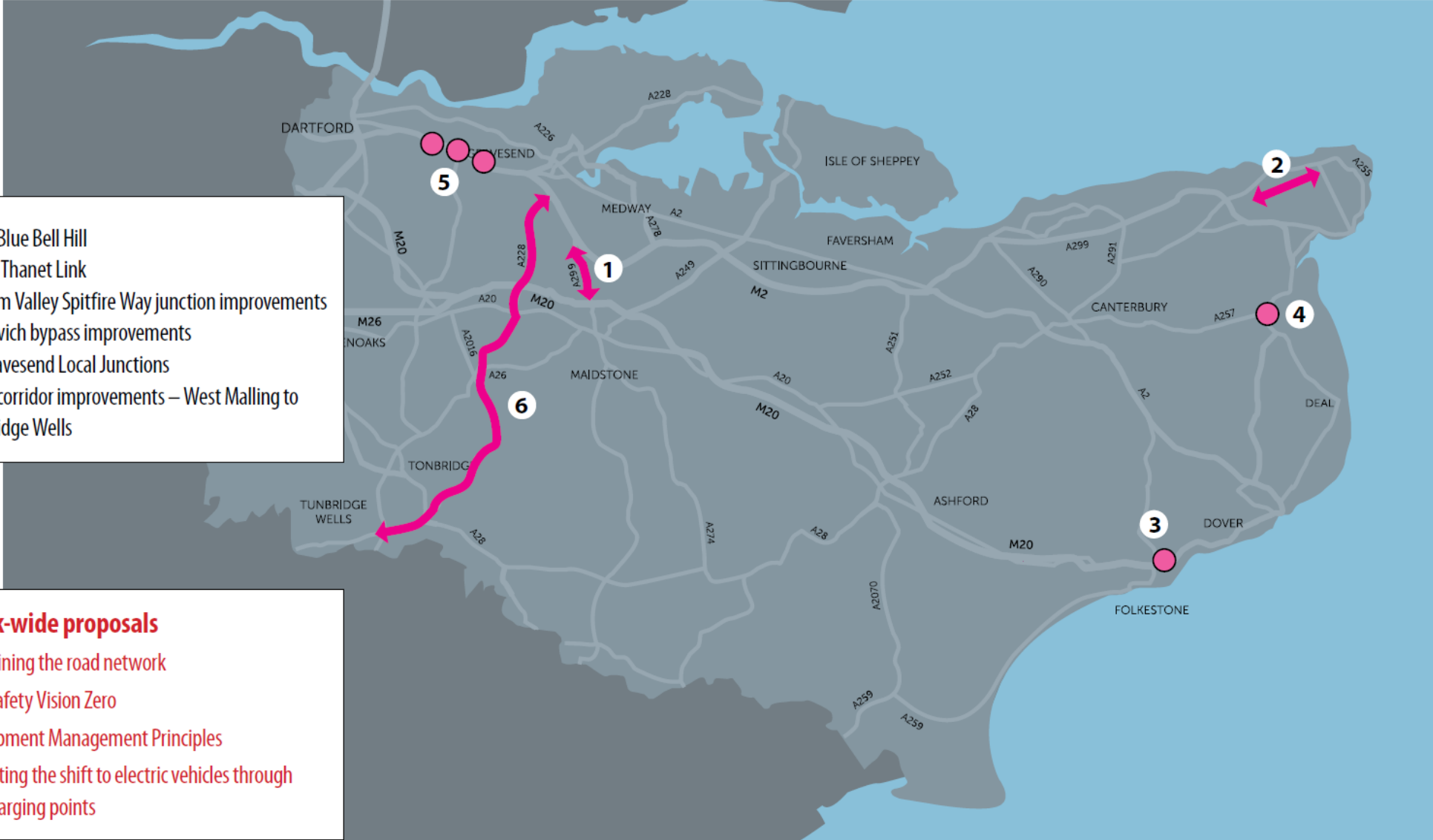


# County wide proposals for the Strategic Road Network



- 1. Lower Thames Crossing
- 2. M2 Junction 1 capacity
- 3. A282 (M25) Junction 1A capacity
- 4. M2 Junction 4 capacity and local development connections
- 5. M2 road capacity enhancement
- 6. M2 Junction 7 capacity enhancement
- 7. South Canterbury A2 junction access enhancements
- 8. A2 Dover Access / Duke of York and Whitfield improvements
- 9. International haulage traffic management
- 10. M25-M26-A21 East-facing slips
- 11. A21 Kipping's Cross enhancement
- 12. Trunking: A229 and A249 between M2 and M20

# County wide proposals for the local road network



1. A229 Blue Bell Hill
2. North Thanet Link
3. Alkham Valley Spitfire Way junction improvements
4. Sandwich bypass improvements
5. A2 Gravesend Local Junctions
6. A228 corridor improvements – West Malling to Tunbridge Wells

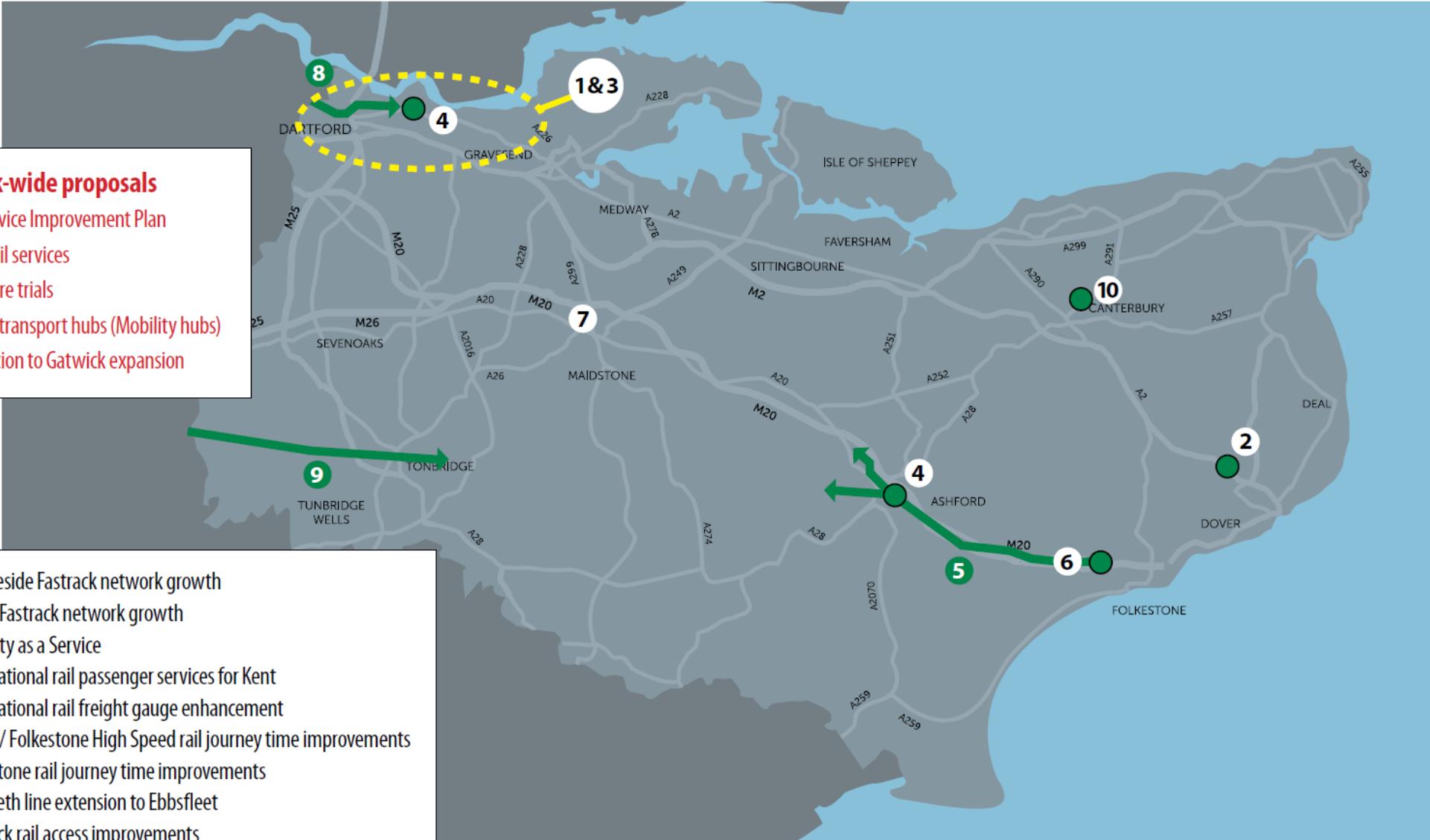
- Network-wide proposals**
- Maintaining the road network
  - Road Safety Vision Zero
  - Development Management Principles
  - Supporting the shift to electric vehicles through new charging points

SUBJECT TO CONSULTATION

# County wide proposals for the public transport network

- Network-wide proposals**
- Bus Service Improvement Plan
  - Local rail services
  - Cycle Hire trials
  - Shared transport hubs (Mobility hubs)
  - Opposition to Gatwick expansion

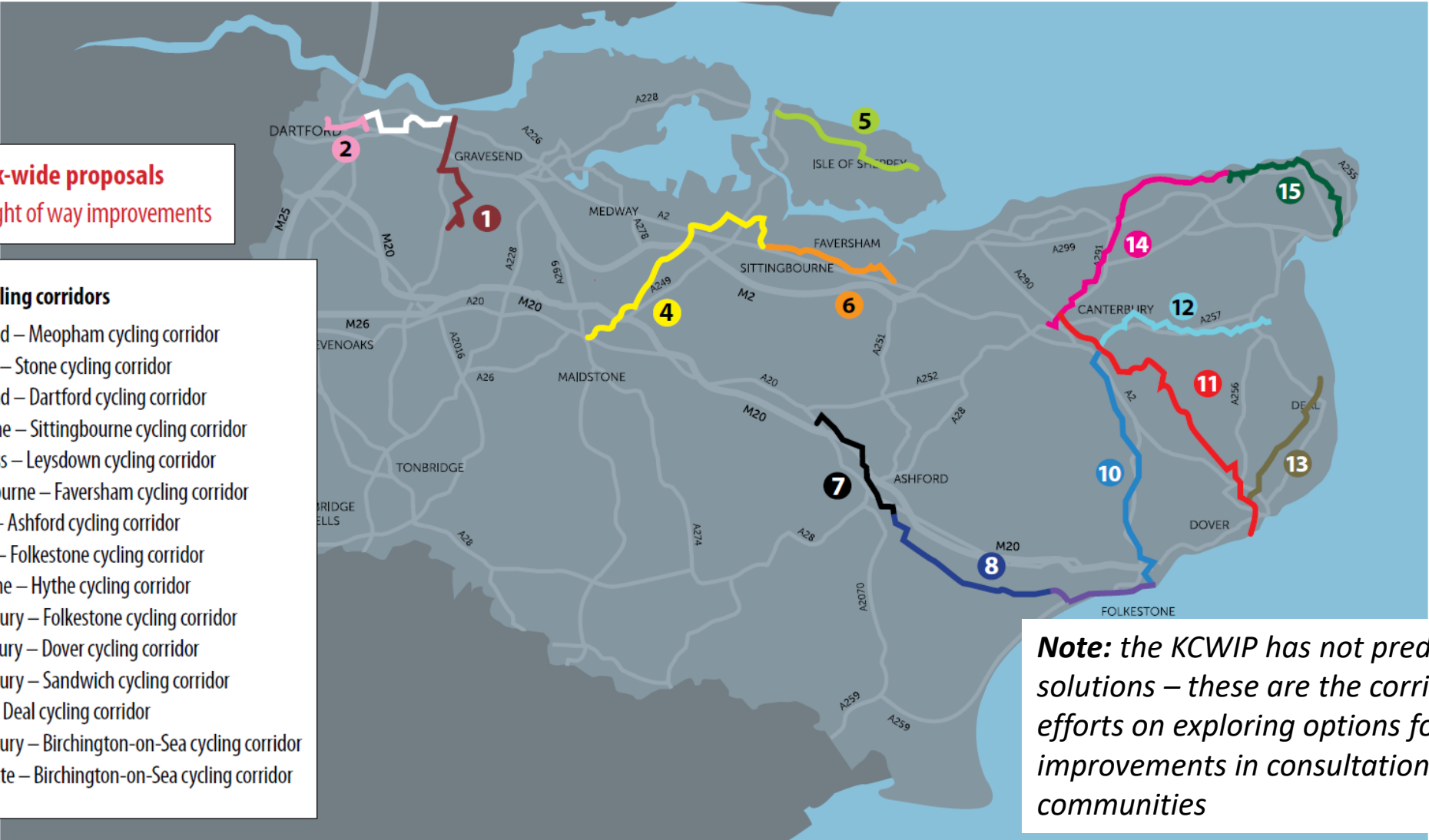
1. Thameside Fastrack network growth
2. Dover Fastrack network growth
3. Mobility as a Service
4. International rail passenger services for Kent
5. International rail freight gauge enhancement
6. Dover / Folkestone High Speed rail journey time improvements
7. Maidstone rail journey time improvements
8. Elizabeth line extension to Ebbsfleet
9. Gatwick rail access improvements
10. Sturry and Canterbury West rail corridor improvements



# County wide proposals for the cycling network

**Network-wide proposals**  
Publics right of way improvements

- KCWIP cycling corridors**
1. Gravesend – Meopham cycling corridor
  2. Dartford – Stone cycling corridor
  3. Gravesend – Dartford cycling corridor
  4. Maidstone – Sittingbourne cycling corridor
  5. Sheerness – Leysdown cycling corridor
  6. Sittingbourne – Faversham cycling corridor
  7. Charing – Ashford cycling corridor
  8. Ashford – Folkestone cycling corridor
  9. Folkestone – Hythe cycling corridor
  10. Canterbury – Folkestone cycling corridor
  11. Canterbury – Dover cycling corridor
  12. Canterbury – Sandwich cycling corridor
  13. Dover – Deal cycling corridor
  14. Canterbury – Birchington-on-Sea cycling corridor
  15. Ramsgate – Birchington-on-Sea cycling corridor



**Note:** the KCWIP has not predetermined solutions – these are the corridors to focus efforts on exploring options for improvements in consultation with local communities

# County wide proposals for the walking network

**Network-wide proposals**  
Publics right of way improvements

- KCWIP**
- 1. Dover walking zone
  - 2. Canterbury walking zone
  - 3. Sittingbourne walking zone
  - 4. Stone walking zone
  - 5. Swanley walking zone
  - 6. Dartford walking zone
  - 7. Herne Bay walking zone
  - 8. Margate to Ramsgate walking zone
  - 9. Herne Walking Zone
  - 10. Swanscombe walking zone
  - 11. Whitstable walking zone
  - 12. Deal walking zone
  - 13. Southborough walking zone
  - 14. Tonbridge walking zone
  - 15. Birchington walking zone



**Note:** the KCWIP has not predetermined solutions – these are the walking zones, overlaid on the cycling corridors, to focus efforts on exploring options for improvements in consultation with local communities

# Ashford district proposals

**LCWIP and KCWIP:** ↗

Ashford to Charing KCWIP route can improve journeys on Ashford Council identified corridors for:

- Route 3 / 3A Highworth School / A20 / Magazine Road
- Charing to Charing Heath improved walk and cycle connections

Ashford to Folkestone KCWIP routes can improve journeys on Ashford Council LCWIP identified corridors for:

- Route 8 Beaver Road
- Route 9 Newtown

**Network-wide proposals**

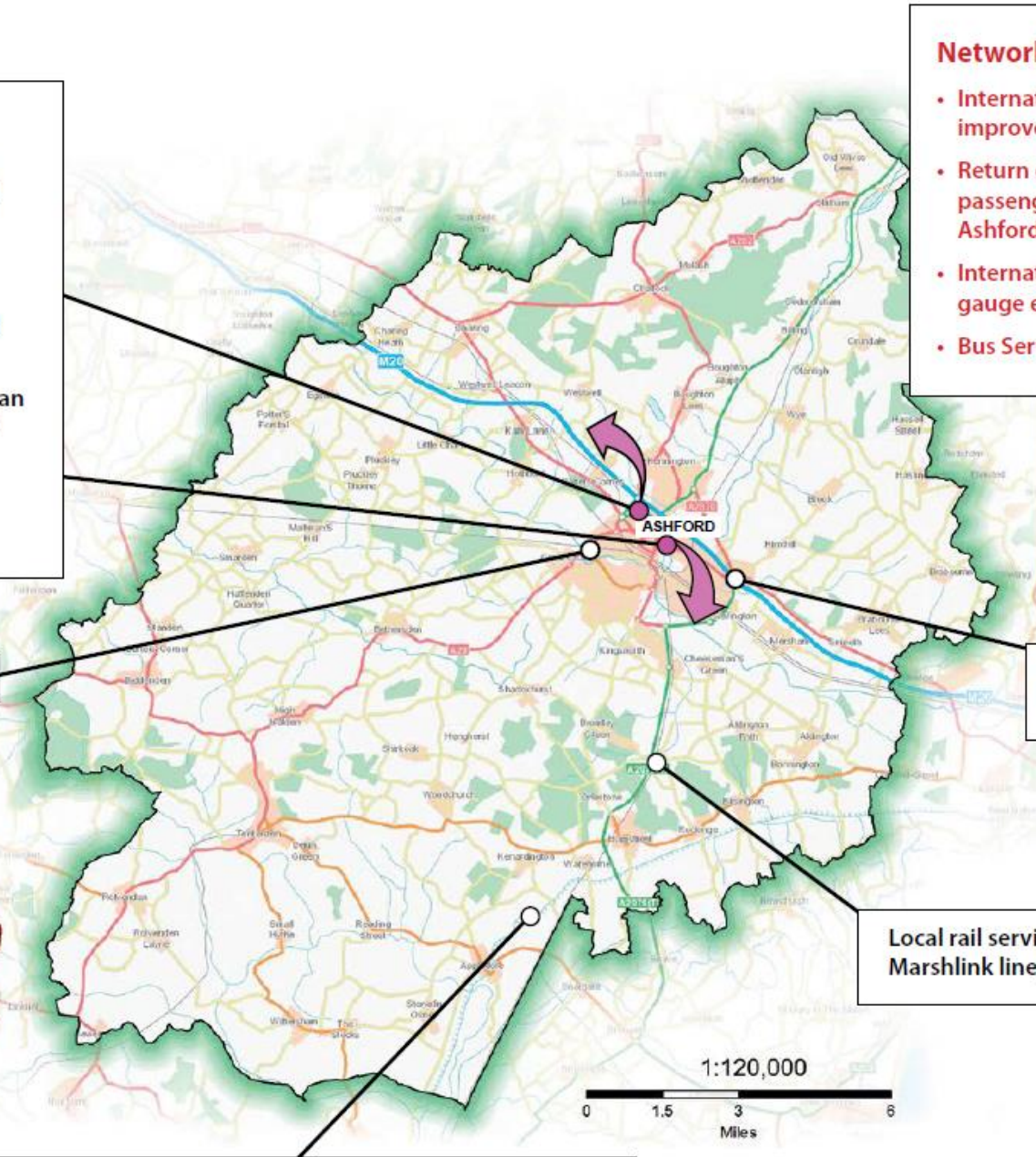
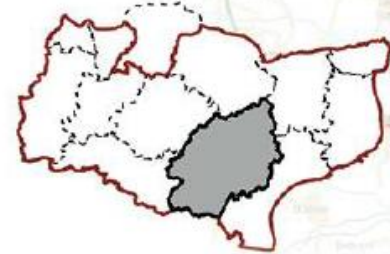
- International Traffic management improvements to the M20 corridor
- Return of International passenger rail services to Kent via Ashford International station.
- International rail freight gauge enhancements
- Bus Service Improvement Plan

A28 Chart Road Improvements

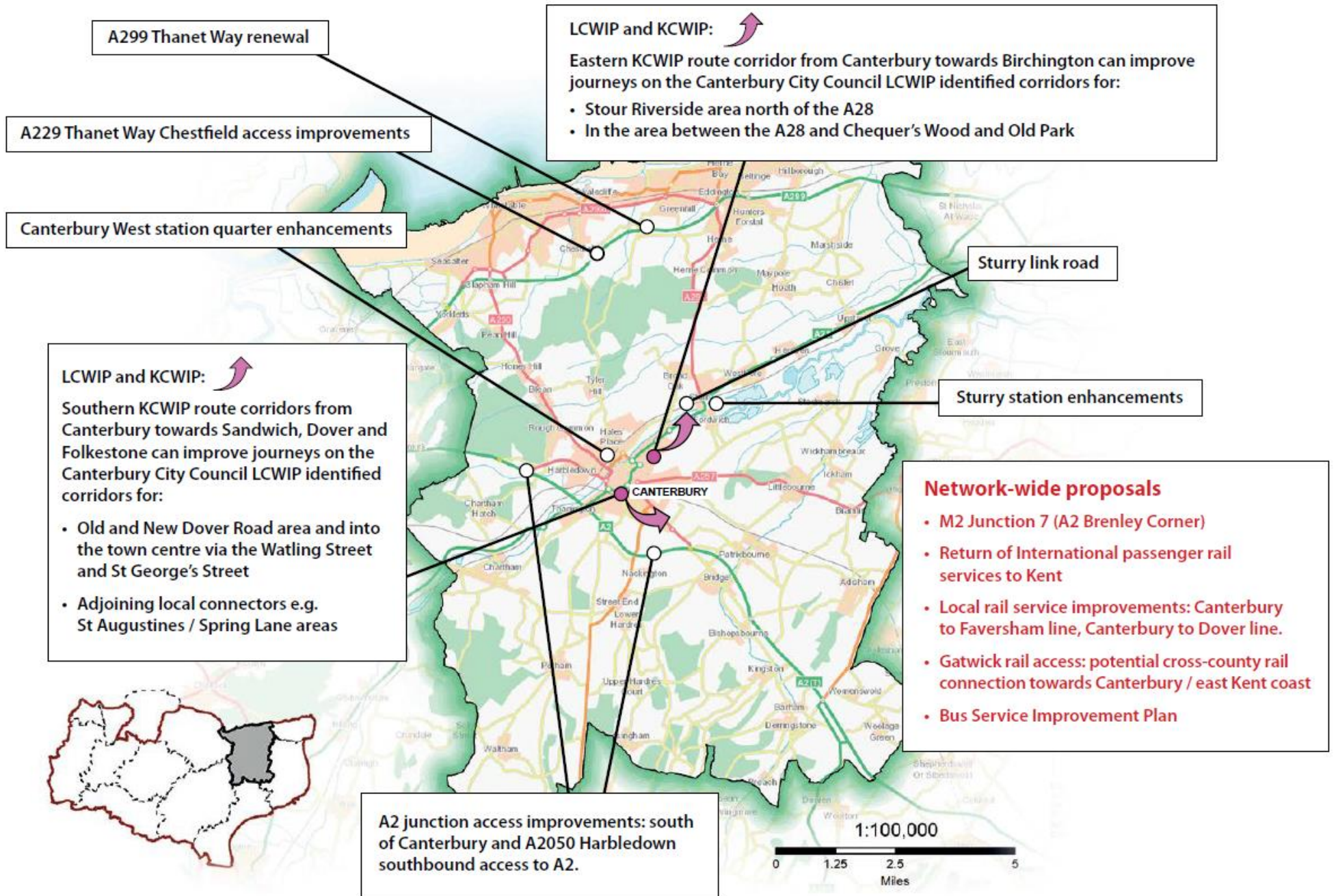
Junction 10a enhancement for local traffic

Local rail service improvements: Marshlink line, Maidstone line

Station connection improvements – Appledore village to station



# Canterbury district proposals



A299 Thanet Way renewal

A229 Thanet Way Chestfield access improvements

Canterbury West station quarter enhancements

**LCWIP and KCWIP:** ↗  
 Eastern KCWIP route corridor from Canterbury towards Birchington can improve journeys on the Canterbury City Council LCWIP identified corridors for:

- Stour Riverside area north of the A28
- In the area between the A28 and Chequer's Wood and Old Park

Sturry link road

Sturry station enhancements

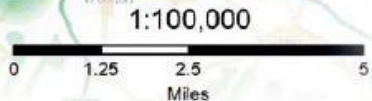
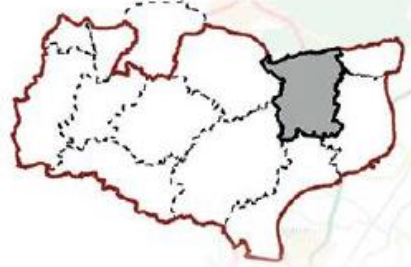
**LCWIP and KCWIP:** ↗  
 Southern KCWIP route corridors from Canterbury towards Sandwich, Dover and Folkestone can improve journeys on the Canterbury City Council LCWIP identified corridors for:

- Old and New Dover Road area and into the town centre via the Watling Street and St George's Street
- Adjoining local connectors e.g. St Augustines / Spring Lane areas

**Network-wide proposals**

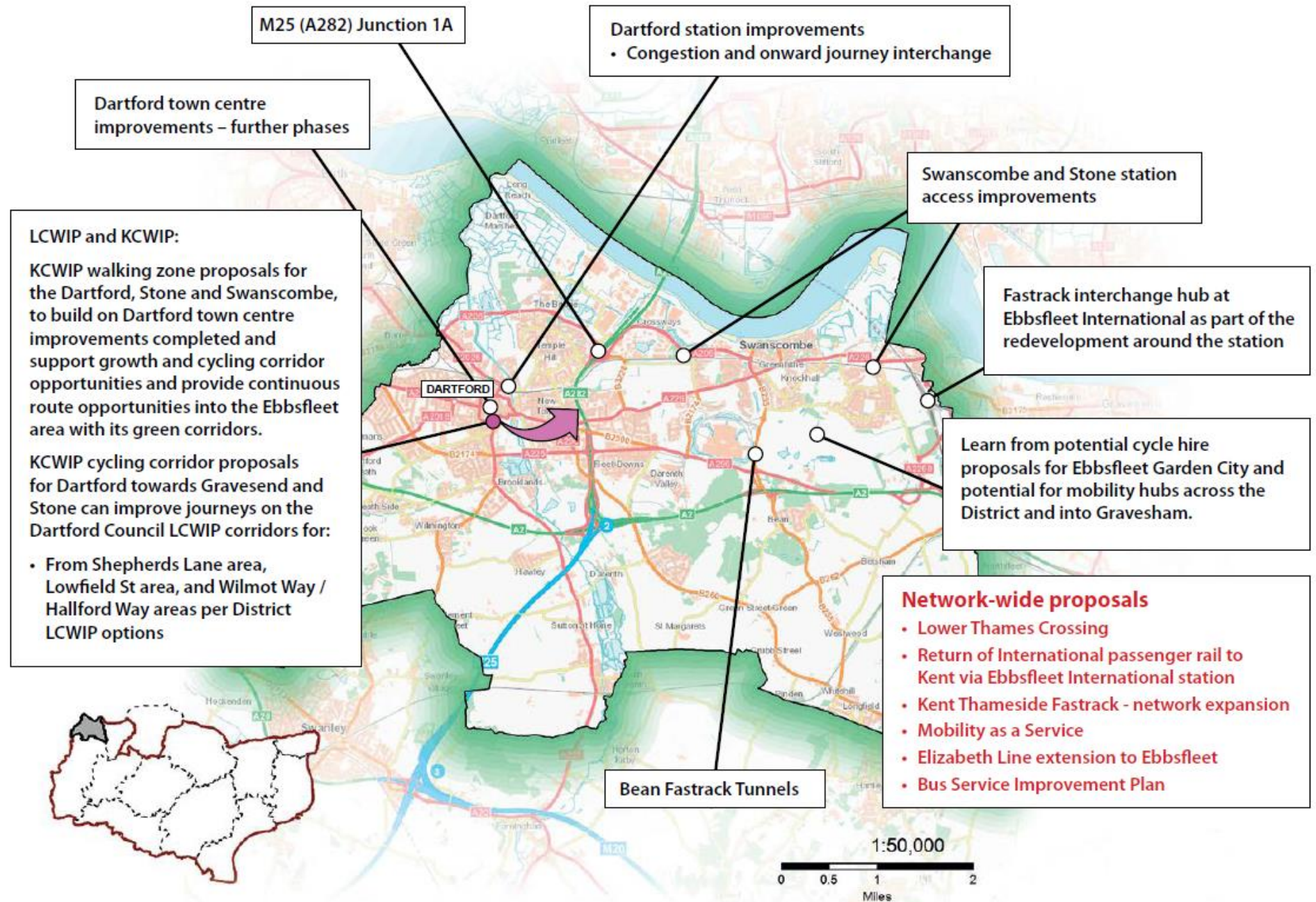
- M2 Junction 7 (A2 Brenley Corner)
- Return of International passenger rail services to Kent
- Local rail service improvements: Canterbury to Faversham line, Canterbury to Dover line.
- Gatwick rail access: potential cross-county rail connection towards Canterbury / east Kent coast
- Bus Service Improvement Plan

A2 junction access improvements: south of Canterbury and A2050 Harbledown southbound access to A2.



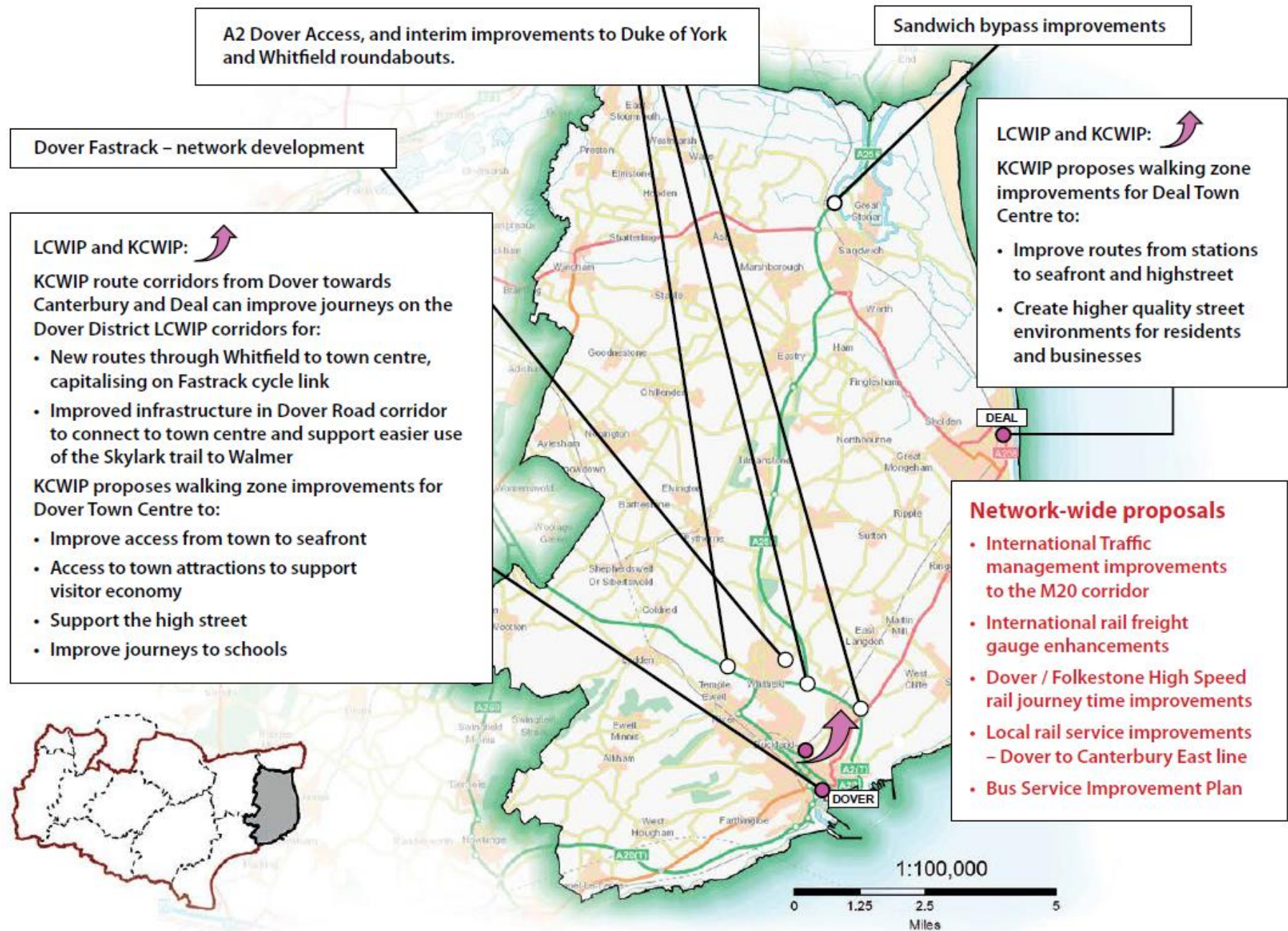


# Dartford district proposals



SUBJECT TO CONSULTATION

# Dover district proposals



# Folkestone and Hythe district proposals

## LCWIP and KCWIP:

KCWIP route corridor towards Canterbury can improve journeys on the F&H LCWIP corridors for:

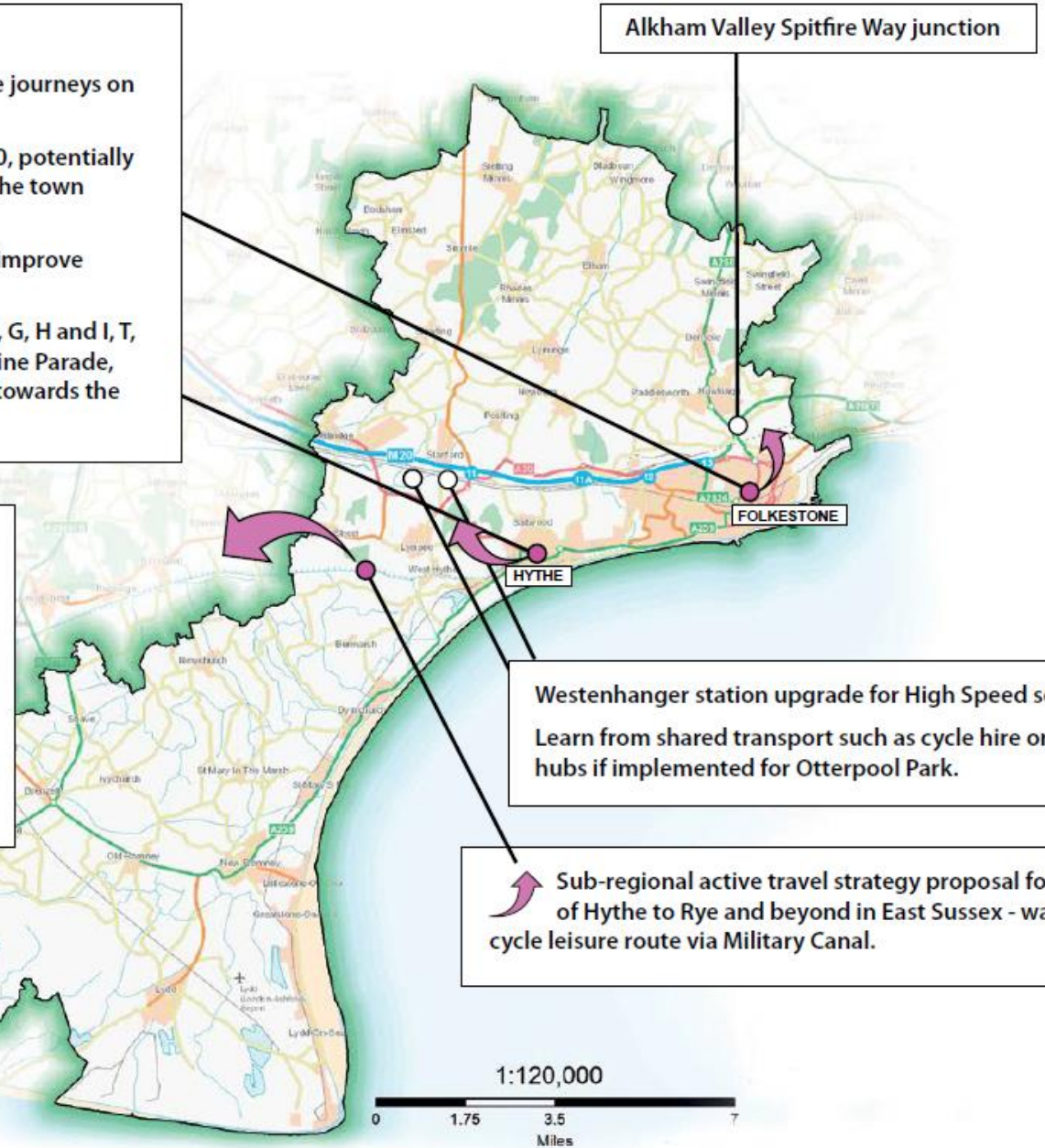
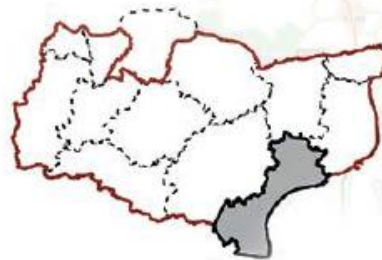
- LCWIP route D in the area around the A259 and A260, potentially including the former Harbour branch line between the town centre and towards Hawkinge

KCWIP route corridor towards Ashford and Hythe can improve journeys on the F&H LCWIP corridors for:


- LCWIP routes within Hythe potentially including E, F, G, H and I, T, Q and R, covering the east-west corridors of the Marine Parade, north-south between there to cross Military Canal towards the A259 corridor for route options towards Lympe

## Network-wide proposals

- International Traffic management improvements to the M20 corridor
- International rail freight gauge enhancements
- Folkestone / Dover High Speed rail journey time improvements
- Return of International passenger rail services to Kent via Ashford International station
- Bus Service Improvement Plan



Westenhanger station upgrade for High Speed services. Learn from shared transport such as cycle hire or mobility hubs if implemented for Otterpool Park.

 Sub-regional active travel strategy proposal for creation of Hythe to Rye and beyond in East Sussex - walk and cycle leisure route via Military Canal.

# Gravesham district proposals

LCWIP and KCWIP: 

KCWIP route corridor towards Dartford can improve journeys on the Gravesham LCWIP corridors for:

- LCWIP routes 1, 2 and 4 between the Ebbsfleet, Northfleet, Springhead and Gravesend town centre

KCWIP route corridor towards Meopham can improve journeys on the Gravesham LCWIP corridors for:

- LCWIP routes 3, 5 and 6 in the Central Avenue – Singlewell Road – A226 corridor south out of Gravesend

A2 local junctions

Lower Thames Crossing

M2 Junction 1 enhancements

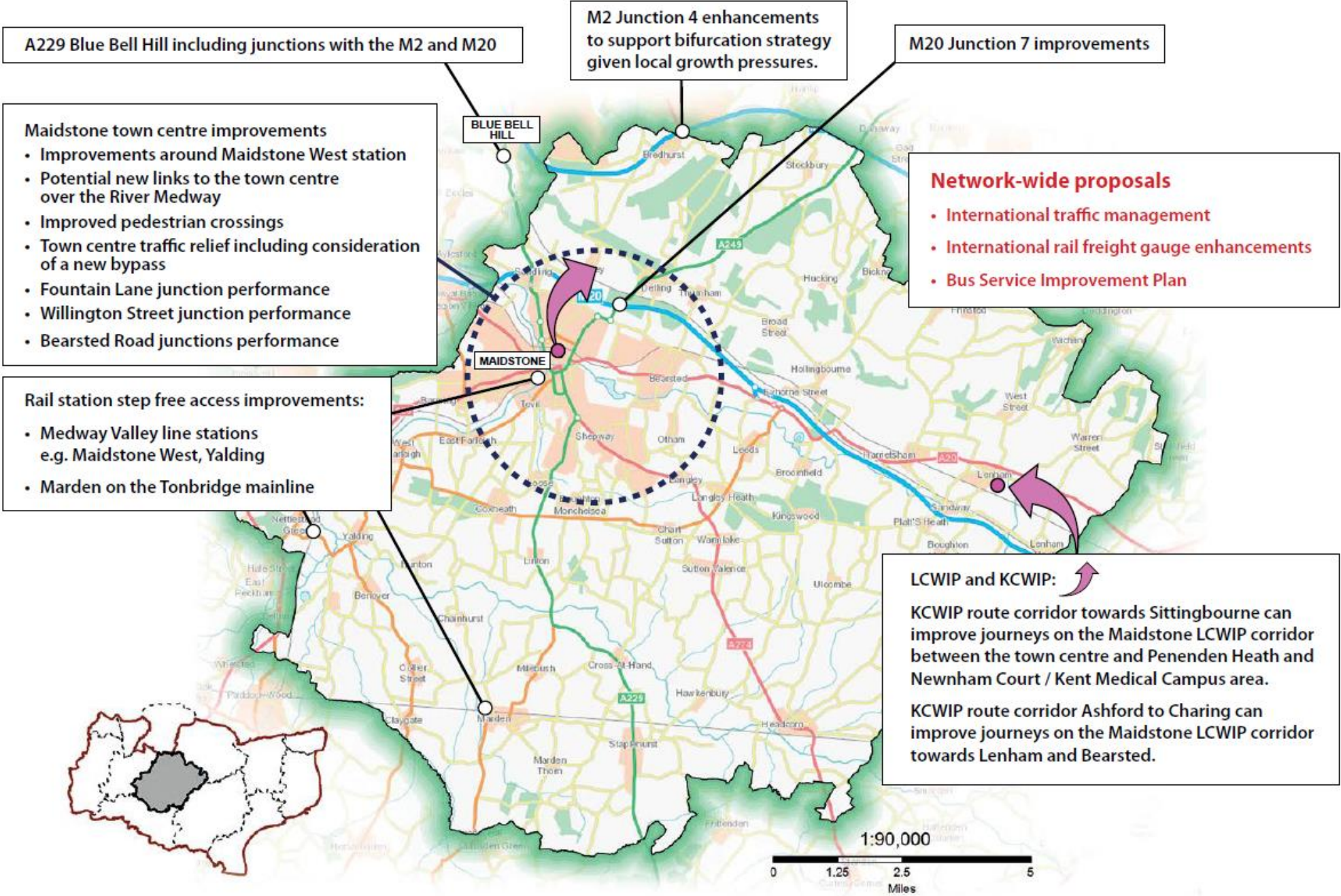
## Network-wide proposals

- Thameside Fastrack – network development
- Return of International passenger rail services to Kent via Ebbsfleet International station
- Bus Service Improvement Plan
- Elizabeth line extension to Ebbsfleet
- Mobility as a Service

1:60,000

0 0.75 1.5 3  
Miles

# Maidstone district proposals



SUBJECT TO CONSULTATION

# Sevenoaks district proposals

**LCWIP and KCWIP:** ↗

KCWIP proposed walking zone in Swanley aiming to provide improved town centre access from suburbs and the rail station, journeys to schools and through improved pedestrian crossing facilities and improved street environments.

LCWIP route 3 and 6 to provide corresponding east-west corridor from Montreal Park to Greatness suburbs in Sevenoaks via the rail station.

LCWIP sets out a cycle network for Sevenoaks with Routes 1 and 5 forming a north-south corridor around the A225 corridor.

M25-M26-A21 – slips for journeys eastwards on M26 to avoid Sevenoaks town centre.

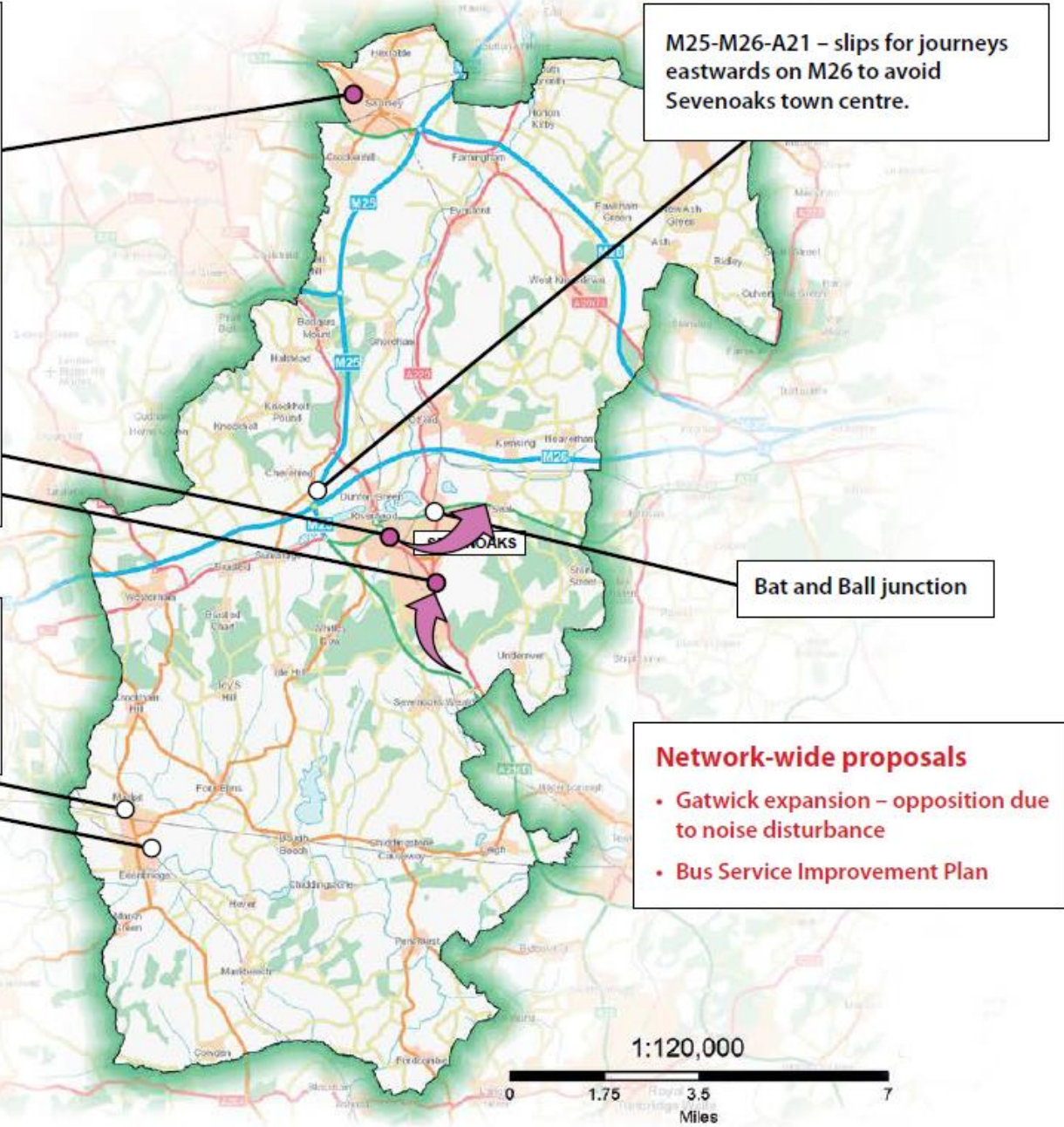
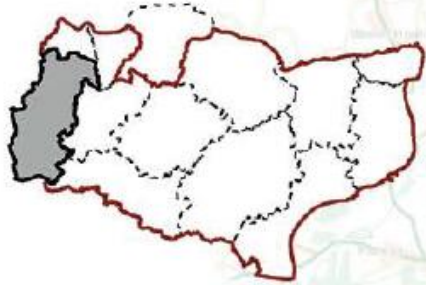
Improved waiting facilities and Step Free Access at Edenbridge rail station.

Access at Edenbridge Town and Edenbridge rail stations.

Bat and Ball junction

**Network-wide proposals**

- Gatwick expansion – opposition due to noise disturbance
- Bus Service Improvement Plan



# Swale district proposals

**LCWIP and KCWIP:** ↗  
 KCWIP route corridor Sheerness to Leysdown supplements and can improve the local cycle network including the Explore Kent Sheerness Way Ships and Chips circular route.

**LCWIP and KCWIP:** ↗  
 A walking zone in Sittingbourne is proposed in the KCWIP. It aims to improve access within the town centre, improve pedestrian safety, access to the retail to the north of the railway line, and to improve journeys to school.

**LCWIP and KCWIP:** ↗  
 KCWIP route corridor Sittingbourne to Faversham supplements local District aspirations for Faversham and provides options supplementing or including the National Cycle Network route to connect into the west side of Faversham.  
 Associated with M2 Junction 7 future upgrade and local area development, improvements to severance to Public Rights of Way between Faversham and Boughton-under-Blean.

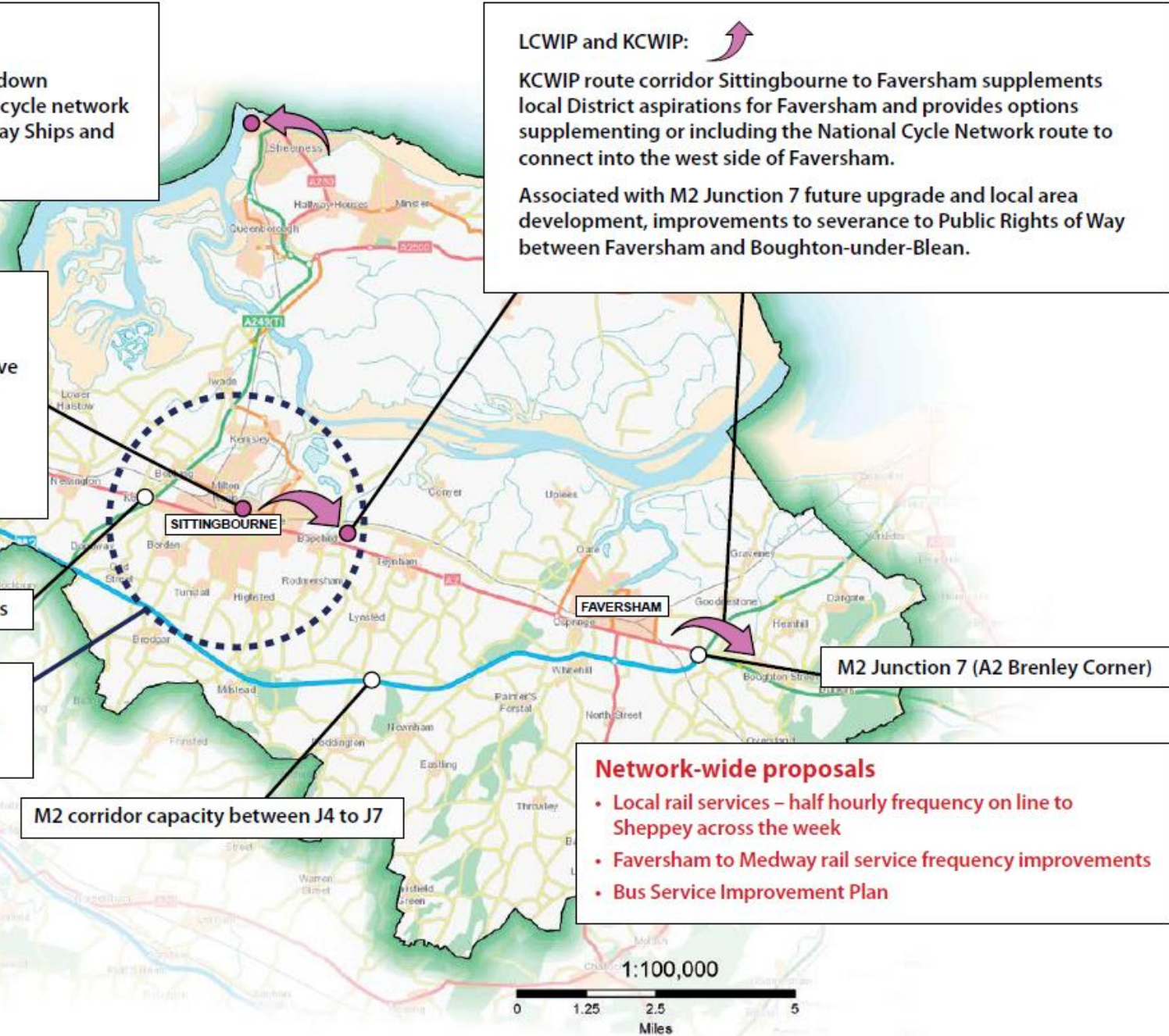
**Key Street junction improvements**

**Sittingbourne town traffic congestion relief** including potential new highways routes between the A2 and M2.


**M2 corridor capacity between J4 to J7**

**M2 Junction 7 (A2 Brenley Corner)**


- Network-wide proposals**
- Local rail services – half hourly frequency on line to Sheppey across the week
  - Faversham to Medway rail service frequency improvements
  - Bus Service Improvement Plan



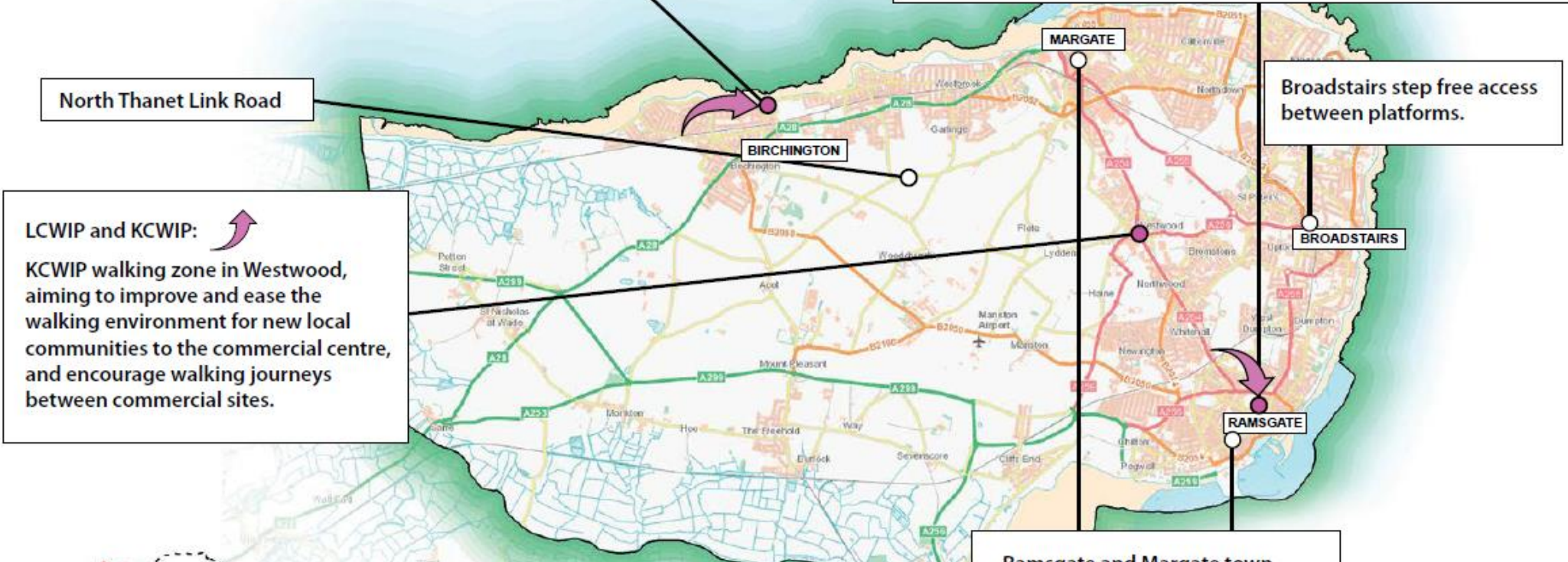
# Thanet district proposals


**LCWIP and KCWIP:** 

KCWIP route corridor Canterbury to Birchington and Birchington walking zone, aiming to deliver improvements and wayfinding to cycle routes from Birchington seafront to the rail station, and town centre, including improved rail station facilities.

**LCWIP and KCWIP:** 

KCWIP route corridor Birchington to Ramsgate, aiming to deliver improvements to sections of the coastal route and to make use of new links from development to improve access on the corridor between Margate and Ramsgate including through the Public Right of Way network.



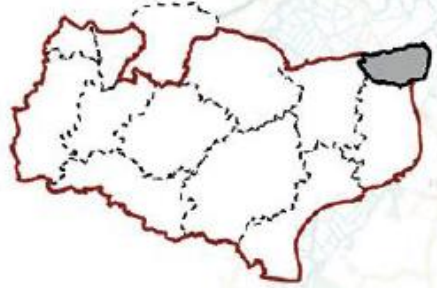
**LCWIP and KCWIP:** 

KCWIP walking zone in Westwood, aiming to improve and ease the walking environment for new local communities to the commercial centre, and encourage walking journeys between commercial sites.

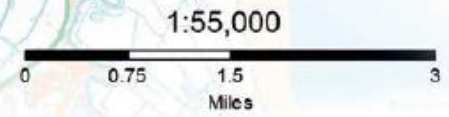
North Thanet Link Road

Broadstairs step free access between platforms.

Ramsgate and Margate town centre improvements as part of the funded Town Deals.



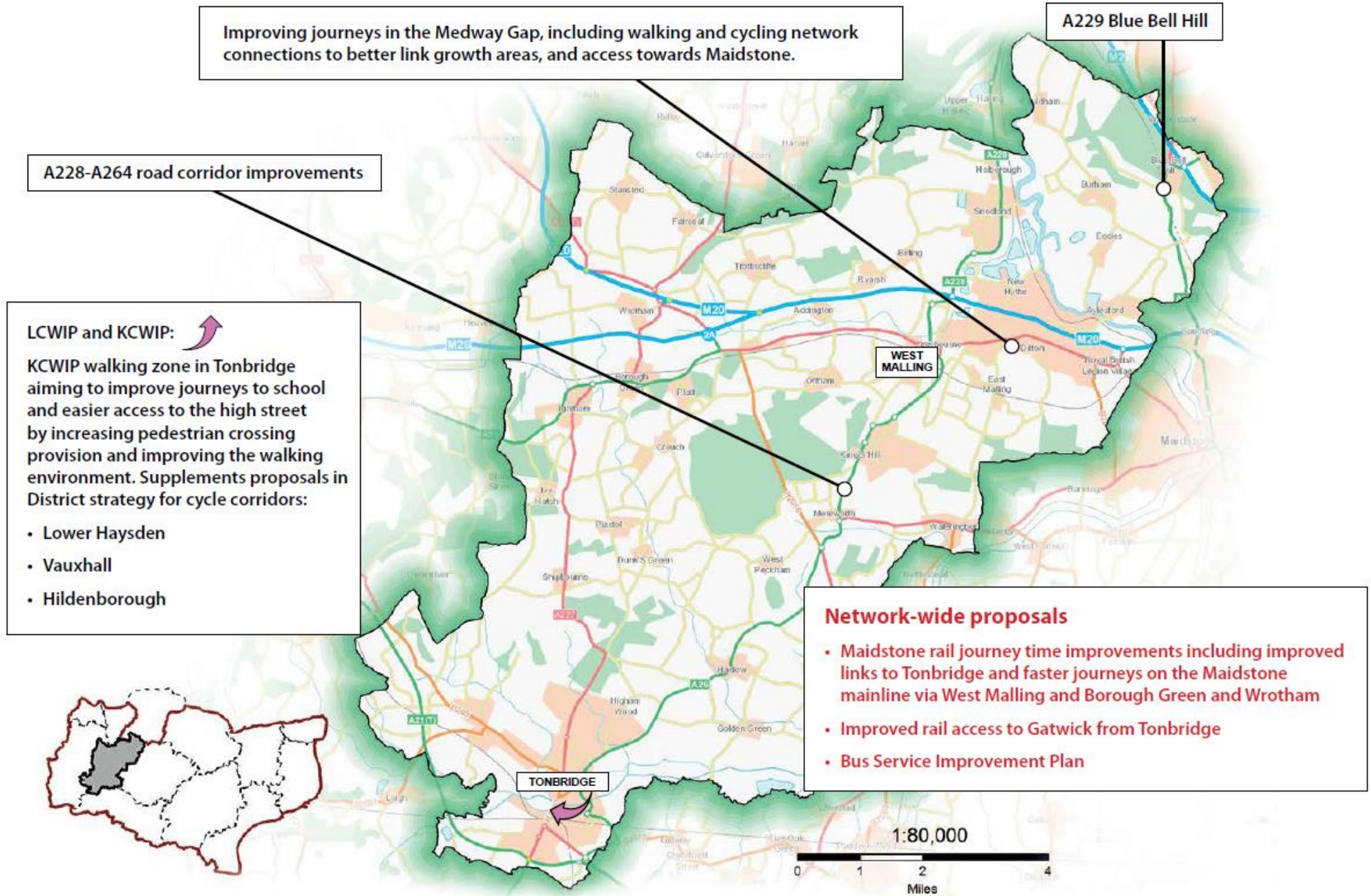
- Network-wide proposals**
- Supplemental local development delivered link roads to maximise connectivity and capacity benefits from North Thanet Link Road and support Inner Circuit delivery
  - Bus Service Improvement Plan



SUBJECT TO CONSULTATION

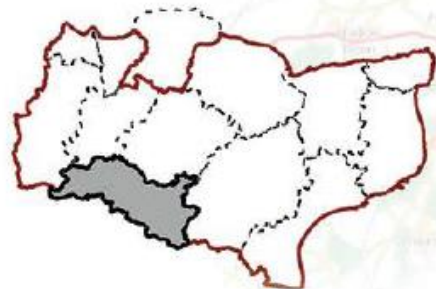
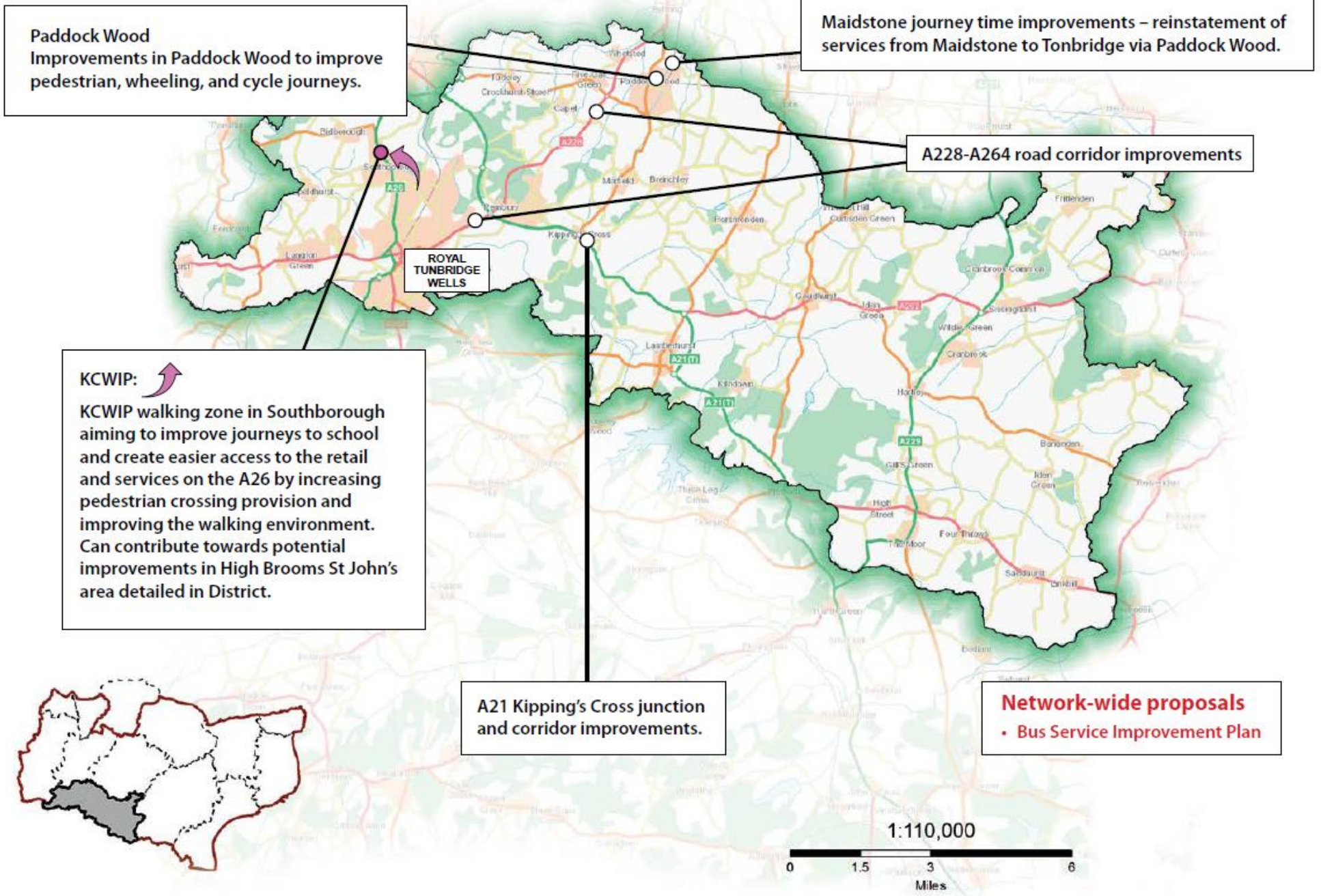


# Tonbridge and Malling district proposals



SUBJECT TO CONSULTATION

# Tunbridge Wells district proposals



# When is the Council's public consultation taking place?

## Runs to end of Tuesday 8<sup>th</sup> October

- Via our Let's Talk online platform – [www.kent.gov.uk/ltp5](http://www.kent.gov.uk/ltp5)
  - In person exhibition events in every district.
  - We will be addressing a wide range of stakeholders.
    - Requests for briefings can be made.
- A briefing note has been provided to all JTB Chairs for distribution to JTB members and noting at any in-session JTBs during the consultation period.
- Requests for hard copies of the Plan (Full or Executive Summary) can be made to [LTP5@kent.gov.uk](mailto:LTP5@kent.gov.uk)

# When will the local transport plan be completed?



The aim is to consider the consultation feedback during October and November.



For the LTP to be adopted a vote of the County Council is required.



There is currently a planned December meeting of the County Council.

SUBJECT TO CONSULTATION



# Thank you for listening.

During the consultation if you need to contact  
KCC officers you can do so at  
[LTP5@kent.gov.uk](mailto:LTP5@kent.gov.uk)

Or call: Joseph Ratcliffe, Transport Strategy  
Manager on 03000 413445  
or Mark Welch on 03000 416595